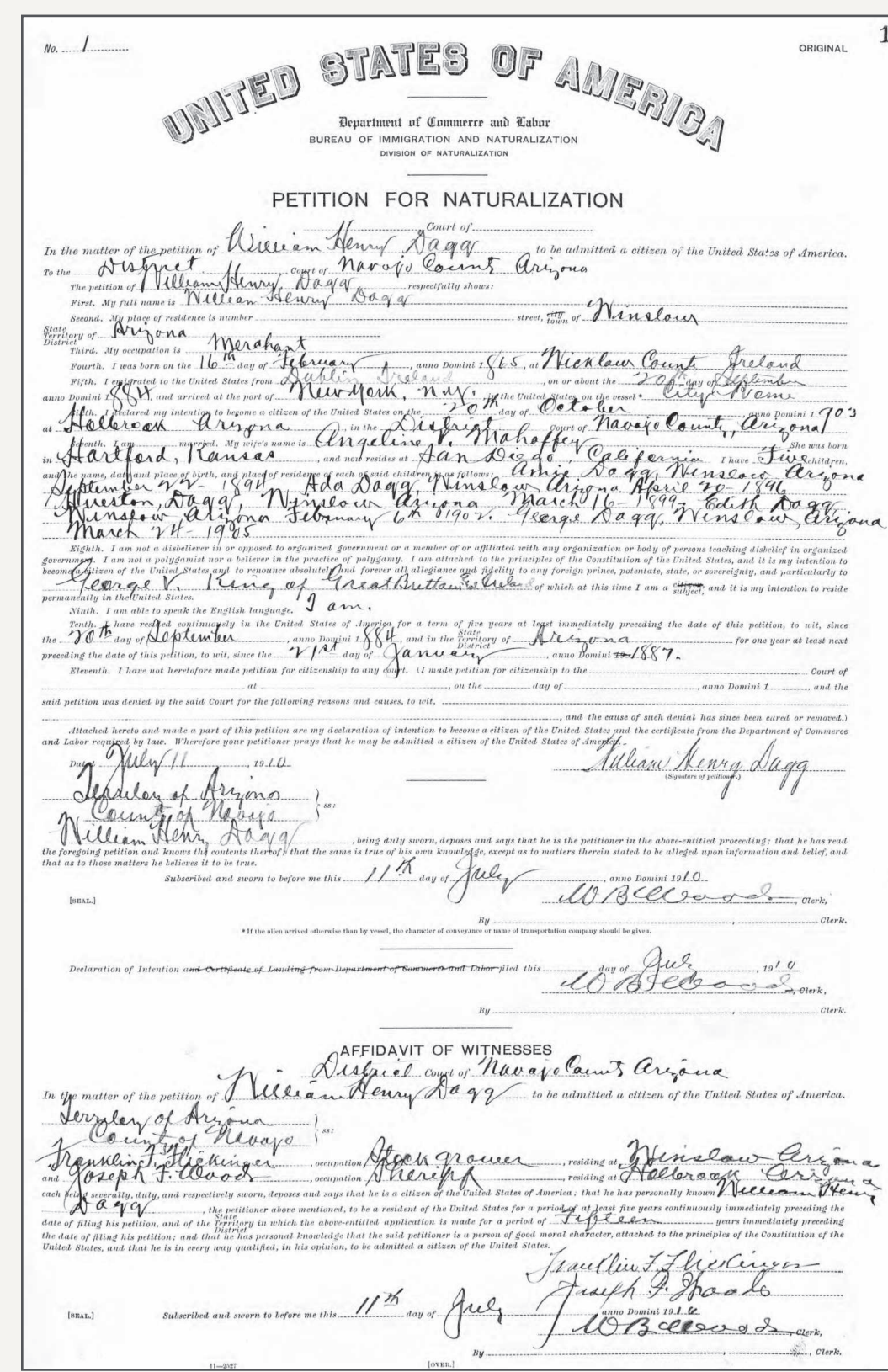


# Entrepreneurs

In the decades following the Civil War, the population of the Territory of Arizona grew. Pre-Civil War, the Arizona Territory's population was estimated to be 6,482. By the 1890s, the population had grown to approximately 88,243. More people led to more opportunities for those with the entrepreneurial spirit. During this busy time of relocation, Irish immigrants built businesses throughout what would eventually become the State of Arizona.

The most accessible avenues of self-employment in the Arizona Territory revolved around mining precious metals and the necessities of the miners. Miners worked their own claims in search of riches, while businesses like boarding houses, restaurants, and supply stores sprung up around the boomtowns. Many boomtown business owners would pick up and start anew wherever the next hot town sprung up. Some business owners managed to have more permanent success.

William H. Dagg arrived in Winslow, Arizona, from County Wicklow in 1884. Like many of his time, William Dagg sought the dry desert life for health reasons. He owned mercantile shops which provided the town of Winslow with groceries, hardware, and dry goods. His store was still advertising its location off of Second and Kinsley streets in 1930.



1910 Petition for Naturalization

Edward and James O'Malley were born in County Mayo. When they immigrated to the United States, the brothers became involved in the business of lumber. The O'Malley brothers made their way out west to Arizona and in 1908 owned the O'Malley Lumber Yard in Phoenix.

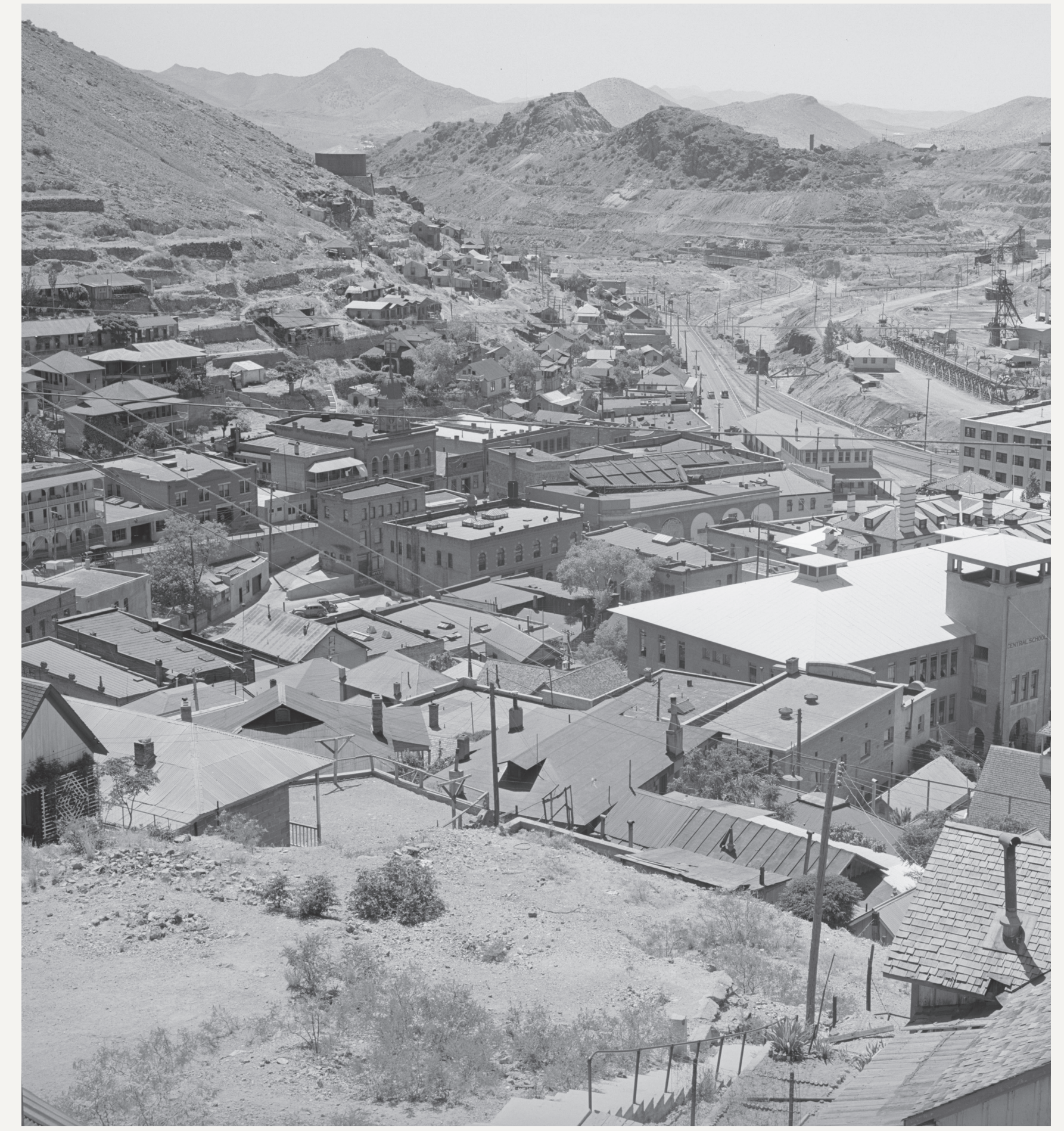


An Old Pharmacy

William Ryan of County Tipperary married Anna Moloney of County Limerick in Globe, Arizona, in 1884. The family put down firm roots in the mining town and in 1904 established a thriving business. The Ryan Company Store provided Globe with important services and goods such as a pharmacy, sporting goods, phonographs, and stationery. Their success led to expansion and in the 1960s 35 Ryan-Evans Arizona stores were sold to Revco.



Lumber Mill Workers



Bisbee, Arizona



Working Cowboy

While many Irish immigrants started their own businesses, a few were successful beyond the average entrepreneur. William Brophy from County Kilkenny would try his hand in banking in the mining town of Bisbee, Arizona, during its boom. His thriving bank created additional opportunities and he expanded into Douglas. Brophy's business interests branched out into other mercantile ventures and desert water systems. His entrepreneurial successes and his family would grow to be some of the most influential in the state. Likewise, a dairy farm founded with a model-T and 20 cows in Tucson by the McClellands of County Down would grow beyond the average Arizona cattle operation. Within a mere 100 years, the Shamrock Foods Company would become one of the largest food distributors in the United States.